



Situation Report 3 – SOUTHERN AFRICA FLOODS – 16 JANUARY 2008

CONTEXT

1. Heavy rain continues to fall over Zambia, southern Malawi and northern Mozambique, engorging rivers in these countries that drain into the Zambezi river, which flows through central Mozambique. Additionally, water levels of several rivers to the south of the Zambezi river valley also continue to rise, increasing the geographical area likely to be affected.
2. As a result, more than 68,000 people have been displaced from their homes. This includes 57,000 people in Mozambique, more than 10,000 in Zimbabwe, and 1,474 in Zambia, according to government and partner assessments. Thousands more have also been affected, mainly through the likely loss of their crops. In Malawi, nearly 176 homes were reported destroyed by recent rains. Estimates of the number of people affected in Malawi are not yet available. In Lesotho and Swaziland, 2,600 people have also been affected by rains according to the International Federation of the Red Cross (IFRC).
3. There is a high probability the heavy rains will continue. To this end, governments in the region are preparing to respond to a possible deterioration of the situation. The UN and non-governmental organizations are working closely with national disaster authorities to activate contingency plans and respond to needs on the ground.

SITUATION OVERVIEW

4. **Mozambique:** Recent flooding has displaced 57,000 people and left three dead, according to information released by the national disaster authorities on 15 January 2008. Overall, more than 1,000 homes have been destroyed, mostly in Sofala, Zambezia, Manica, Inhambane, Nampula and Cabo Delgado provinces. So far, more than 37,000 hectares of crops are known to have been destroyed by the flood waters, according to authorities.
5. The Government has been forced to evacuate people out of two resettlement areas created after the 2007

floods which are now threatened by rising water levels. As a result, residents of the resettlement camps in Jardim and Cachaco (Mutarara district) have now been moved twice in the space of one year.

6. In addition to the Zambezi, other major rivers in Mozambique continue to rise. Both the Save and Limpopo rivers are above flood alert levels, while significant increases are also being reported in the levels of the Buzi and Pungue rivers, resulting in the evacuation of communities to higher resettlement areas. The Cahora Bassa Dam is discharging water at more than 6,000 cubic meters per second on average (*See Table 1 for trends in water levels at selected stations*).
7. FAO, WFP, UNICEF and other international and national NGOs have deployed their staff to the Instituto Nacional de Gestão de Calamidades (INGC) operations centre in Caia to assist the local authorities with the identification of priority needs in areas affected.
8. These include food assistance, provision of education materials, water and sanitation supplies, shelter and family items, and basic health and nutrition support. Many emergency items have already been pre-positioned affected areas. The Resident Coordinator will be applying for CERF funding to meet immediate start-up needs, including for logistics and telecommunications support.
9. WFP has started food distributions in Mutarara and Machanga districts, but road access is hampering efforts in the latter. The UN food agency also estimates that a total of 282,000 people will require assistance in the flood-affected areas, including those affected by floods in 2007 and still in need of help.
10. Meanwhile, UNICEF is working with Government authorities to ensure access to safe water by supplying water and sanitation materials (plastic sheeting, water treatment plants and chlorine) to areas in Marromeu, Caia and Mutarara districts. The UN agency is also working on a plan to rehabilitate water points in resettlement camps used to house evacuees.

11. Some telecommunications equipment has already been installed in the INGC Caia operations centre. Services provided by the Emergency Telecommunications Cluster are for all humanitarian actors operating in the affected areas. Common telecom and data services will also be installed in Vilanculos, Mutarara and Mopeia.
12. **Zimbabwe:** The recent rains have been the worst experienced in the last 127 years, according to the national meteorological service.
13. More than 10,000 people have been affected since the beginning of December 2007. This figure includes and an additional 54 households in Mvuma (Midlands) and 65 households in Tsholotsho (Matabeleland North), affected by heavy rains and localized flooding on 8 January.
14. Final results of rapid assessments conducted in Chiredzi, Mwenezi, Gutu and Chipinge have found a critical situation only in the latter, where gaps still exist in the areas of food, shelter, non-food items and water and sanitation. MSF-L is in the process of deploying a mobile clinic to the district.
15. **Zambia:** The Disaster Management and Mitigation Unit reported another 674 persons displaced in Monze district, bringing the total number of affected to 1,474. They are currently temporarily hosted in schools in the nearby communities of Hakunkula, Kanundwe, Nyakasangwa, Malundu and Ntandabale. All of the 117 displaced families mentioned in earlier situation reports have been relocated from schools to tents.
16. The national Vulnerability Assessment Committee (VAC) has been mobilized to assess the needs in districts affected by the recent flooding. Results are to be shortly finalized.
17. Preliminary rainfall analysis conducted by WFP for Zambia suggests that the 2007/2008 harvest will be greatly reduced. It predicts that most of the grain-producing districts are likely to experience a reduction in the harvest due to too much rain. There is already evidence of crops suffering from leeching (the loss of nutrients) both on higher grounds due to rain and in low-lying ones due to water logging.
18. **Namibia:** People in rural constituencies of Kabee and Katima in the Caprivi region are witnessing rising water levels along the Zambezi as a result of heavy rains in southern Zambia. Torrential rains destroyed several mud houses in the settlement of Chotto. Estimates of the number of people affected are not yet available.
19. The Directorate of Emergency Management is currently assessing needs in the Caprivi Strip, with the aim of undertaking preparedness measures.
20. **Malawi:** Additional flooding took place in the district of Nsanje on 11 January 2008, according to the Department of Disaster Management Affairs (DoDMA). Estimates of the number of people affected are not yet available.
21. **Lesotho:** According to a joint assessment conducted by the Lesotho Red Cross Society and the national Disaster Management Authority severe storms during the first week of January 2008 affected up to 2,000 people in the Mafeteng district.
22. **Swaziland:** According to the IFRC, rains in the last week of December 2007 have also affected up to 120 households (600 people) in southern and northern Hhohho, and in Lubombo regions.

OTHER

23. The IFRC Disaster Relief Emergency Fund (DREF) has approved CHF 1 million for the Southern Africa flood operation and is currently mobilizing its emergency response team to support the assessment processes of the National Red Cross Societies in the worst affected countries of Zimbabwe, Mozambique and Zambia. The IFRC will also be issuing a Preliminary Emergency Appeal for recovery programmes aimed at mitigating future risk for the populations affected by the current disaster.

End.

Contacts:

Mr. Andrea Recchia,
Humanitarian Affairs Officer (Johannesburg), +27 11 517 1624

Ms. Mette Tangen,
Desk Officer (New York), +1 917 367 3001

Ms. Elizabeth Byrs,
Press contact (Geneva), +41 22 917 2653

Ms. Stephanie Bunker,
Press contact (New York), +1 917 367 5126

Annex - Table 1.

Trends in water levels at selected stations

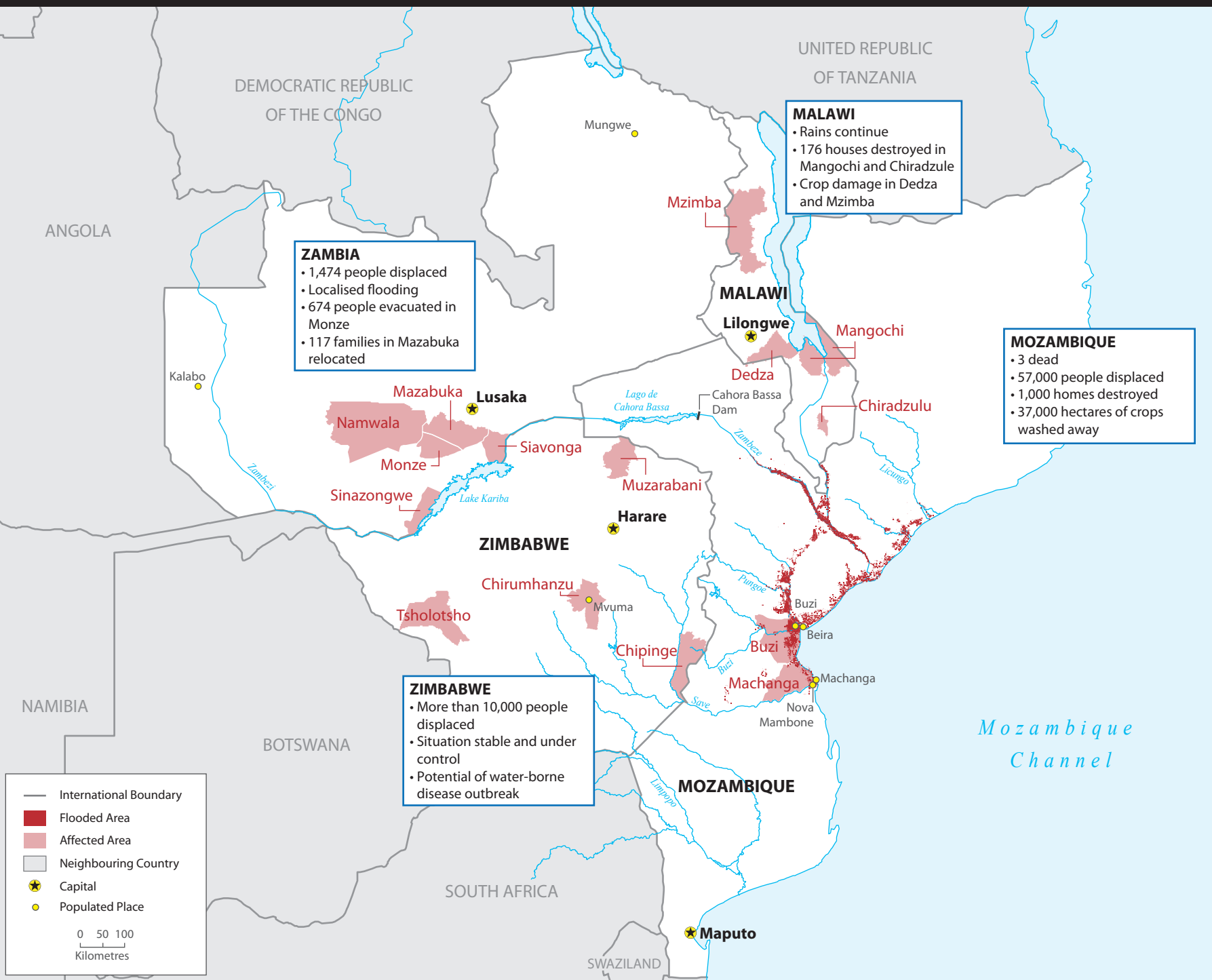
Station	Alert level	5-Jan-08	6-Jan-08	7-Jan-08	8-Jan-08	9-Jan-08	10-Jan-08	11-Jan-08	12-Jan-08	13-Jan-08	14-Jan-08
Zambeze River at Tete	5	5.41	5.6	5.4	5.83	6.02	6.12	6	6.16	6.4	6
Zambeze River at Caia	5	6.77	6.75	6.72	6.73	6.81	7	7.16	7.3	7.37	7.48
Zambeze River at Marromeu	4.75	6.13	6.25	6.44	6.38	6.37	6.43	6.56	6.63	6.78	6.86
Buzi River at Goonda	5	3.6	3.53	3.4	3.25	3.62	4.9	NA	5	4.25	4.17
Púnguè River at Púnguè Sul	NA	4.66	4.75	4.86	5.17	5.18	7.05	5.8	5.52	5.45	5.35
Save River at V.F. Save	5.5	4.7	4.31	4.3	4.27	4.1	4.7	5.2	6.73	7.5	7.15
Save River at Massangena		3.65	3.65	3.53	NA	NA	NA	NA	NA	NA	NA
Limpopo River at Combomune	4.5	3.9	3.8	3.68	3.66	3.65	3.58	3.45	3.39	5.35	5.64
Licungo River at Gurué	3.5	2.06	1.98	1.76	1.73	1.92	1.88	2.02	2.66	2.58	2.44

Readings at Cahora Basa Dam

	5-Jan-08	6-Jan-08	7-Jan-08	8-Jan-08	9-Jan-08	10-Jan-08	11-Jan-08	12-Jan-08	13-Jan-08
% Full	60.17	60.35	60.42	60.28	59.99	59.78	NA	59.89	59.78
Discharge (m ³ /s)	4962.1	5275.5	6149.3	6574.3	6584	6630	NA	6165.5	6181.9

Source: Mozambique National Hydrological Bulletins

Southern Africa: Floods (as of 16 Jan 2008)



ZAMBIA

- 1,474 people displaced
- Localised flooding
- 674 people evacuated in Monze
- 117 families in Mazabuka relocated

MALAWI

- Rains continue
- 176 houses destroyed in Mangochi and Chiradzule
- Crop damage in Dedza and Mzimba

MOZAMBIQUE

- 3 dead
- 57,000 people displaced
- 1,000 homes destroyed
- 37,000 hectares of crops washed away

ZIMBABWE

- More than 10,000 people displaced
- Situation stable and under control
- Potential of water-borne disease outbreak

SITUATION

- Heavy rain continues to fall over Zambia, southern Malawi and northern Mozambique, engorging rivers that drain into the Zambezi River, in central Mozambique. Water levels of several rivers to the south of the Zambezi River valley also continue to rise.
- More than 68,000 people displaced. Thousands more affected through the likely loss of their crops.
- High probability that heavy rains will continue and the situation may deteriorate.

LINKS

- OCHA Situation Report No. 3
- Latest updates for Southern Africa: Floods
- Related maps

Disclaimer:

The boundaries and names shown and the designations used on all maps do not imply official endorsement or acceptance by the United Nations.

The data and information represented originates from public sources as indicated. ReliefWeb makes every effort to use the latest available data and to ensure that its products are accurate, complete and timely, but no warranties are made to this effect. Comments are welcome to maps@reliefweb.int.

Creation date: 16 Jan 2008

Base map sources: UNCS, SALB, Global Discovery, GNS, UNOSAT.

Narrative and statistical sources:
UNCT. 14 Jan 2008. Southern Africa: Floods
UN OCHA. Situation Report No. 3.