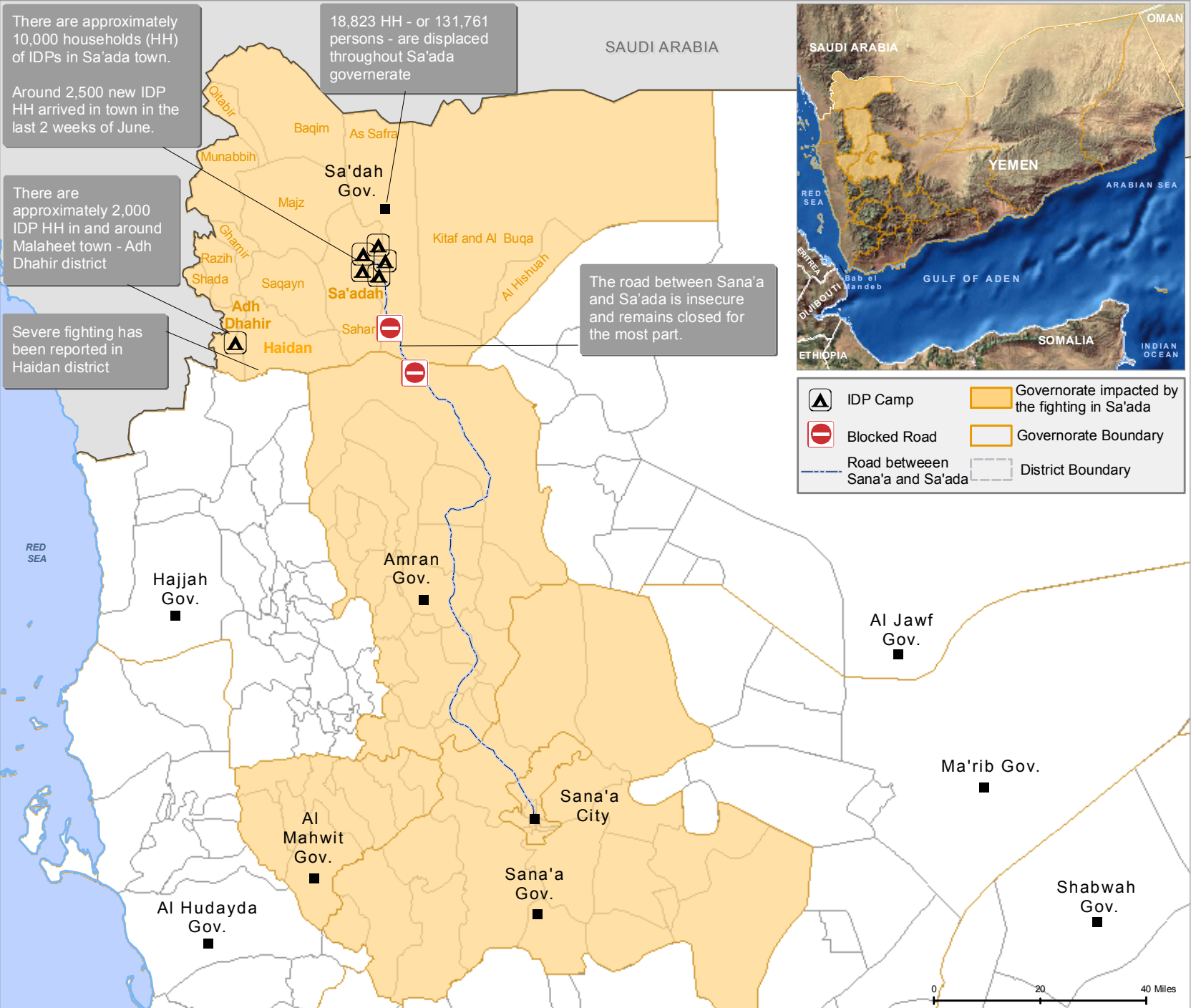


YEMEN: Situation Map - as of 3 July 2008



There are approximately 10,000 households (HH) of IDPs in Sa'ada town.

Around 2,500 new IDP HH arrived in town in the last 2 weeks of June.

18,823 HH - or 131,761 persons - are displaced throughout Sa'ada governorate

There are approximately 2,000 IDP HH in and around Malaheet town - Adh Dahir district

Severe fighting has been reported in Haidan district

The road between Sana'a and Sa'ada is insecure and remains closed for the most part.



	IDP Camp		Governorate impacted by the fighting in Sa'ada
	Blocked Road		Governorate Boundary
	Road between Sana'a and Sa'ada		District Boundary



Situation

Displacement and registration
Based on Yemeni Red Crescent and WFP registration figures, at least 18,823 HH - or 131,761 persons - are displaced throughout the Sa'ada governorate.

It is estimated that 2,500 new HH arrived in Sa'ada town in the last two weeks of June. Of these displaced groups, around 56% are in Sa'ada town and/or official camps.

As agencies are currently unable to reach Al-Melaheet (where nearly 2000 HH are settled), only 66% of IDPs can be reached by aid workers

Movement and access
All entry points into Sa'ada town have been closed by the military.

The Sana'a-Sa'ada road is very insecure and remains closed for the most part. As a result, there is a reduction in the movement of aid supplies, medicines, food and diesel, and food prices are highly inflated.

The resulting lack of fuel in Sa'ada town is further causing a shortage in electricity and water, since most pumps are no longer working.

Disclaimer: These are approximate numbers based on information provided by the media and partner agencies on the ground. Due to access and security problems they cannot be fully verified.

Disclaimers:
The boundaries and names shown and the designations used on all maps do not imply official endorsement or acceptance by the United Nations.
The data and information represented originates from UN country team as indicated.
Creation date: 3 July 2008
Map sources: UNCS and NASA.
Narrative and statistical sources:
UN OCHA, 3 July 2008.
Situation Map of Yemen

United Nations
Office for the Coordination of Humanitarian Affairs - Regional Office for the Middle East, North Africa and Central Asia

