



FOCUS ON Ethiopia

SEPTEMBER 2008



CONTENTS IN THIS ISSUE:

- SUMMARY OF THE LATEST HUMANITARIAN REQUIREMENTS DOCUMENT AND THE NEW GOVERNMENT STRUCTURE
- REGIONAL OVERVIEW
- UPCOMING & ONGOING MEETINGS

Focus on Ethiopia is produced by UN Office for the Coordination of Humanitarian Affairs (OCHA), in collaboration with other UN agencies and partner NGOs. Focus on Ethiopia provides a monthly overview of humanitarian trends and activities in Ethiopia, as well as focusing on particular issues of interest. Send comments, suggestions and contributions to ocha-eth@un.org.

HUMANITARIAN REQUIREMENTS DOCUMENT:

The Government and Humanitarian Partners' issued an updated Humanitarian Requirements Document on 14 October seeking emergency assistance for 6.4 million beneficiaries. The total food and non-food requirement for the estimated beneficiaries has reached **US\$ 265,666,710**. The net food requirement stands at 270,245 MT, amounting to US\$ 218 million to addresses needs from September to December 2008. In addition, the Targeted Supplementary Food Programme that assists children and pregnant mothers requires 8,276 MT valued at US\$ 7.8 million. The requirement to respond to non-food needs of identified beneficiaries has also been adjusted to address needs until the end of the year.

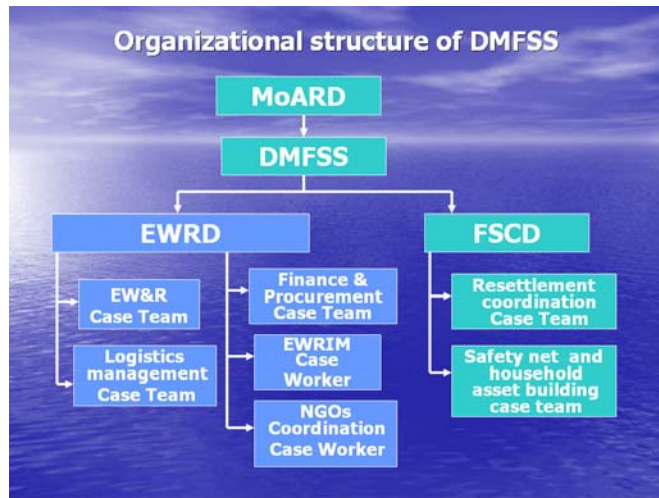
The health and nutrition, water and sanitation and agriculture and livestock sectors have in total requested for US\$ 39,791,882.

Sector	Total Requirement	Available Resources	Net Requirement
General Ration: gross: 461,745 MT (373,883 MT cereals; 11,216 MT oil; 37,388 MT pulse; 39,258 MT blended food)	372,629,022	154,521,132	218,107,890
Supplementary food for EOS/TSF: Gross: 13,955 MT of blended food, oil and RUSF; Net: 8,276 MT	13,044,473	5,277,535	7,766,938
Food sub-total	385,673,495	159,798,667	225,874,828
Health & Nutrition	26,366,896	196,927	26,169,969
Water & Sanitation	2,900,000	-	2,900,000
Agriculture & Livestock	10,721,913	-	10,721,913
Non-food sub- total	39,988,809	196,927	39,791,882
GRAND TOTAL	425,662,304	159,995,594	265,666,710



GOVERNMENT'S REFORM PROGRAMME:

The document also clarifies the new structure of the Ministry of Agriculture and Rural Development (MoARD) following the reform. Based on the recommendations of the Business Process Reengineering the Disaster Prevention and Preparedness Agency and the Food Security Bureau have been merged within the MoARD. Led by a state minister reporting directly to the Deputy Prime Minister, a Disaster Management and Food Security Sector (DMFSS) with two wings of Early Warning and Response Directorate (EWRD) and Food Security Department has been established to reduce disaster risks and improve resilience of food insecure and vulnerable households by putting in place an effective all hazard early warning and response system. In the Regions the coordination mechanisms will be further strengthened at all levels.



On 13 October, MoARD briefed partners on the outcomes Government reform programme. The reform aims to enhance outputs of the Ministry by addressing outstanding challenges. The Ministry was identified as pilot institution for undertaking the reform, which will continue in the remaining ministries. Major achievement of the reform include redesigning mission oriented, more customer focused and outcome centered as well as establishing process based organizational structure.

The Early Warning and Response Business Process strives to address the major shortcomings identified in the previous system including, duplication of efforts, lack of a harmonized approach, crises management focus, poor multi-sectoral approach and lack of standardized methodology. The reform tries to address the drawbacks and aims to develop a more efficient, coordinated and effective early warning and response system.

Among the major stretch objectives identified within the reform include the following:

- Placing an effective and efficient EW&RS within one year in areas where WoredaNet is fully operational and in two years time where it is not yet fully operational;

- Preparation of early warning information in different languages and disseminate to end users within one day;
- Developing vulnerability profiles for all woredas within five years time;
- Strengthening preparedness through stand-by capacity at selected strategic areas in two years time.

REGIONAL OVERVIEW

SOMALI

The humanitarian situation continues to deteriorate during the month as the dry season, *hagaa*, extended into October. Critical food shortages water scarcity, high livestock morbidity and increasing prevalence of stress-driven rural-urban migration continue to be reported from most parts of the region. The cumulative effects of the poor performance of consecutive rainy seasons coupled with rising food prices and declining livestock income has put the lives and livelihoods of many people at risk. Approximately 1.9 million people in the region require emergency food assistance.

Rural-urban migration of people in search of food and assistance increased during the month as the food security situation worsened. According to the September report by DPPB/SC-UK areas where the highest movements have been seen so far are parts of Warder, Fik, Dagahbur and Gode zones and some parts of Shinile zone. The dire food security situation is also hugely impacting upon the nutritional status of communities, particularly children and the elderly. Increasing levels of malnutrition, attributed to a reduction in the number of daily meals along with decline in quality and portion continued to be reported in many areas. According to the September report by DPPB/SC-UK, malnutrition is increasing in *deyr* receiving zones. Meanwhile, Enhanced Outreach Strategy screening has taken place in 13 woredas and a total of 49,445 beneficiaries have been identified. Pre-positioning of TSF food to the main warehouses is now completed.

Relief and safety net food continues to be the main source of cereal supply to help farmers and pastoralists cope with the shortage of food grains in local markets and soaring food prices. A hubs and spokes system is being established by WFP following agreement with Government. A high-level meeting between WFP, the State Minister of the Disaster Management and Food Security Sector (DMFSS) and the Somali Regional President took place on 24 September in Jijiga to firm-up agreements between key stakeholders on the launch and implementation of the new logistics system.

Shortage of water for both human and livestock consumption continues to pose a critical challenge for health and livelihoods. Most water sources have not been replenished due to the failure of *gu* rains. Water tankering from the existing boreholes is the main source of water for affected communities. The capacity of the boreholes is, however, diminishing due to excessive usage and limited replenishment. Rehabilitation of water sources is also an outstanding priority.



The increasing feed scarcity as a result of the failure of three consecutive rainy seasons has contributed to abnormal livestock mortality in the deyr receiving zones particularly in Warder, Fik, Korahe, Gode, and Degehabur, reports the DPPB/SC UK September update. Reported mortality of camel, the most drought resistant animal, in Warder (Warder and Galadi woredas), Korahe, Degehabur and Fik zones is an indicative of the dire situation, highlights the report.

The DPPB/SC-UK September report indicates a continued increase in the price of maize during the last 12 months (October 07- September 08): 264 percent (from 110 to 400 birr per 50 kg of maize) in Gode; 275 percent (from 120 to 450 birr/50 Kgs) in Fik; and 250 percent (from 80 to 350 birr/50 kg) in Korahe. The escalating price is attributed to the recurrent crop failures combined with limited availability in the markets. On the other hand, the declining trend in the price of livestock continues to deteriorate the Terms of Trade, increasingly becoming unfavorable to pastoralists. The trend reached its lowest point by September 2008 where the value of a single shoat was worth only an average of 9 to 17 kgs maize in the three markets. The overall deterioration in the ToT during this period is 83 percent for both Korahe and Gode and 76 for Fik.

AMHARA

The overall food security situation continues to concern humanitarian actors following poor *belg* performance. Early cessation of *meher* rains in some parts of the region is also anticipated to affect crop production. AWD continued to spread to new woredas posing an enormous threat to health.

Approximately 815,000 people are in need of emergency food assistance in the coming three months according to latest Humanitarian Requirements Document. Relief interventions are planned to be undertaken in 39 woredas in six zones in the northeastern parts of the region.

Although all woredas received *meher* rains in North Gondar zone, the amount and distribution was inadequate particularly during the last week of the month. In North Wollo, no rains were received in all woredas in the last days of the month. The rains were also insufficient in South Wollo affecting crop growth particularly in Argoba, Kalu and Ambasel woredas of the zone. According to WFP crops have completely failed in nine lowland kebele of Worebabo Woreda. A multi-agency team led by the regional DPPB is currently assessing the impact of *meher* rains in Amhara Region.

Furthermore, a hailstorm reportedly damaged 816 hectares of crops in Kare Guracha kebele in Achefer woreda of West Gojam Zone. According to reports from the area, 209 iron sheet houses and 116 thatched huts were damaged reportedly displacing approximately 500 households. In TeleMT woreda of North Gondar, hailstorm has also affected crops planted on 90 ha of Land. Furthermore, a bird pest (kulea-kulea) outbreak in Kewot Woreda of North Shewa and Packnoda outbreak in areas bordering Afar Region has affected planted crops.

Although not adequate, some efforts including chemical spray were undertaken to control the pests. Physical body conditions of livestock, on the other hand, have improved due to better availability of pasture in North and South Gondar, North and South Wollo and North Shewa Zones.



AWD continued to spread to new woredas bringing the total number of affected woredas to 21 for the period between January to 28th September. The disease has been controlled in 10 woredas as of the end of September, leaving 11 woredas reporting active cases. The spread of the disease is largely attributed to inadequate supply of safe water, poor sanitation and hygiene practices coupled with shortage of medical supplies and health staff. With the harvest season approaching and movement of many thousand of employees to the farms in the region, it is expected that AWD will spread to areas, WHO reports.

Efforts are underway by Government and humanitarian partners to contain the spread of the disease. The FMOH, WHO and UNICEF have provided support to the zonal and woreda health offices in the affected areas. WHO provided trainings to health extension workers on AWD management and surveillance. UNICEF has coordinated the emergency response on the ground in addition to distributing sanitation supplies. WHO has strengthened the regional laboratory's capacity to improve diagnosis through the provision of laboratory reagents, materials and training for laboratory staff.

Under the Targeted Supplementary Feeding (TSF) intervention, approximately 58 MT of food has been dispatched to Tenta, Mekdella and Legambo Woredas of South Wollo zone during the month. The increased need for nutritional interventions in the most critical woredas and kebeles has fostered concerns about overall supply of nutrition resources.

The overall supply of crops on the market follows a normal trend with a relatively stable price. The price of livestock, on the other hand, has slightly increased.



SNNP

Although the green harvest of maize and haricot beans is reportedly contributing to a slight improvement in the food security situation in some areas of SNNPR, an estimated 1.5 million drought affected people are in need of emergency food relief between September and December 2008

Poor *meher* rains in Konso, Burji, Amaro, Humbo, M. Abaya, Zala U/D Tsehai and Arba Minch Zuria have led to poor land preparation and harvest yield. Government and humanitarian partners are closely monitoring rainfall patterns in the region to determine the impact upon crop production and future food security.

The impact of the drought and food crisis in the region is manifest in the number of admission to the therapeutic feeding centers. Recent reports indicate that 33,275 children have been admitted for treatment of Severe Acute Malnutrition (SAM) between June and September 2008. Concerted efforts by government and humanitarian partners to respond to the nutrition crisis are beginning to translate into a decrease in admission rates to both Therapeutic Feeding Units (TFUs) and Out-Patient Therapeutic Programme (OTPs) sites. According to the Emergency Nutrition Coordination Unit (ENCU), general admission rates to OTPs have decreased by 25 percent and admissions to TFUs by 35 percent during the reporting week 12 -18 September when based on comparison with previous weeks.

In spite of decreased admission rates, continued support in the form of supplementary feeding is required to ensure that children who have been successfully treated for SAM do not relapse in the coming weeks. In addition to the health associated risks posed by malnutrition, partners are concerned about the potential for further spread of Acute Watery Diarrhea (AWD). As of the end of September, only East Badawacho has continued to report confirmed case of AWD. However, rainfall expected in the coming weeks coupled with poor quality of water and limited access to hygiene and sanitation services create significant risks for further spread to other woredas. WHO has provided support for laboratory reagent and materials to enhance capacity for improved and timely diagnosis.

Government and humanitarian partners continue to respond to the range of needs generated by the drought and food crisis in the region through emergency food relief, therapeutic feeding programmes, health, WASH and livelihood interventions. To date, 1,332,010 beneficiaries have been allocated 93,995 MT of emergency relief food of which 89,852 MT has been dispatched. More than 33,000 children have accessed life-saving treatment at therapeutic feeding sites across the Region and UNICEF, working closely with the Regional Health Bureau (RHB), has facilitated the supply and delivery of much-needed Plumpy'nut and therapeutic feeding milk. FAO continues to advocate for the incorporation of early recovery interventions into the overall response and has completed the delivery and distribution of seeds to farmers in the region.

OROMIYA

The food security situation in Oromiya Region remains compromised due to the combined impact of the drought and food crisis. Recent rainfall has not brought about an alleviation of the food security situation as farmers have not been able to yield sufficient harvest yields.



Although some improvement in pasture and water availability for livestock has been reported by WFP monitors, communities in lowland areas of Bale, Borena, Guji and Hararghe continue to incur heavy losses of animals. People living in the eastern areas of Oromiya and West Shewa are particularly affected by food insecurity and the situation has been further compounded by inadequate coverage of humanitarian interventions. The government, with support from WFP, has targeted 1,088, 537 beneficiaries for relief and to date 51,964 MT has been allocated of which 49,652 MT has been dispatched. The government's decision to revise the number of beneficiaries requiring emergency relief assistance from September to December 2008 means that a total of 1,521,590 people will receive additional support in the form of food aid.

The most immediate consequence of food insecurity has been increase in the number of children suffering from severe malnutrition. To date, 19,339 children have accessed treatment for Severe Acute Malnutrition (SAM) at Out-Patient Therapeutic (OTPs) sites and Therapeutic Feeding Units (TFUs) between July and September. The capacity of humanitarian partners to scale-up responses is stretched and there are concerns that the situation will further deteriorate without additional interventions. CARE reports that due to access to green harvest, better milk production and emergency food and nutrition interventions, the nutritional status in East and West Hararghe zones has slightly improved. The total number of children admitted to the Dire Dawa and Haromaya OTP sites has reduced as per the agency's latest report.

In response to the malnutrition challenges, WFP reports that a total of 100 MT of TSF food is distributed to 3,620 beneficiaries. In addition, food allocation for 16,671 beneficiaries in 'six priority 1 woredas' is underway following the ad-hoc screening undertaken by the regional health bureau. WASH and health partners are working to minimise the threat to human health posed by Acute Watery Diarrhea (AWD). At the end of September, five woredas continue to report active AWD cases Zwey Dugda, Ada'a, Gibichu, Lume and Dukem.



Rainfall will increase the risk of further outbreaks. UNICEF has dispatched drugs, sanitary and cleaning equipment to health officials in the region to support treatment of AWD cases, however, further assistance in the form of water purification chemicals is required as a matter of urgency.

In addition to the humanitarian needs generated by the food and drought crisis, there are growing concerns about the potential for re-emergence of resource-based conflict in some parts of the Region.

TIGRAY

Emergency assistance has been extended to November 2008 due to the poor food security situation in Tigray Region. AWD outbreak still persists and increased number of malnutrition cases has also been reported during the month.

The failure of *belg* season, poor performance of *meher* rain (Azemera), increase of the price of crops and low demand of agricultural labour have contributed to a deteriorated food security situation in the region. As a result, a total of 601,435 beneficiaries have been included in the October 2008 Revised Humanitarian Requirements Document for emergency relief assistance.

According to the findings of the *belg* assessment, only 2 percent (8,349 quintals) production has been achieved out of planned production (422,036 quintals) as the actual planted area was only 1,505 hectare out of the 27,796 hectare planned. In addition, *meher* production is not promising due to delayed start and early cessation of the rains. The performance of *meher* crops for 2008 has virtually failed in the eastern block woredas of the region bordering Afar due to drought, reports UNICEF. The woredas most affected by the drought include: Erob, Gulomekeda, Saesie Tsaeda Emba, Atsbi Wonberta, Enderta, Hintalo Wajirat, Tanqua Abergele, Raya Azebo and Alamata.

Heavy rains and hailstorm damaged an estimated 20% to 100% of cultivated land (over 3,000 hectares) in Ahferom woreda, affecting an estimated 4,750 households. In Hawzien and S/Ts/Emba woredas, similar extreme weather conditions damaged 3,550 hectares of land belonging to 13,995 households.

Water and pasture availability have been compromised due to the poor performance of the rains particularly in Raya Azebo, Alamata, Atsbi Wonberta, Enda Mokoni, Hentalo Wajerat, Kilde Awlaelo, Ahferom, Tanqua Abergele, Erob, Gulomekeda and Saesie Tsada Emba woredas. According to recent assessment reports by DPPB/UNICEF, an estimated 170,000 people face serious water shortages in the drought affected woredas of Raya Azebo, Hentalo Wajirat, A/Womberta, Saesie Tsada Emba, Erob Gulomekeda, Ahferom, M/Leke, L/Adiabo and T/Adiabo.

Acute Watery Diarrhoea has re-appeared in the region during the month. Eight woredas have been affected and as at end of September three woredas were reporting

active cases. The number of new admissions of malnutrition cases to stabilization centers has increased among children under the age of five. ENCU also reports that the increase in number of reporting sites has contributed to the rise in caseload.

The physical condition of livestock in drought affected woredas has deteriorated. As a result livestock death and migration was reported from Raya Azebo, H/Wajirat, S/Ts/Emba and A/womberta. High migration is reported from Raya Azob to parts of Alamata, Alaje and Enda Mokoni. Similarly, livestock have migrated from Atsbi Wonberta to Kilde Awlaelo and Tseabde Emba woredas and from T/Abergele to adjacent areas in Amhara Region.



There is limited supply of cereals in most markets compared to livestock availability. A slight decrease of cereal crops (wheat, maize and teff) has been reported from most woredas, reports WFP. On the other hand, livestock price has highly reduced compared to normal times in A/Wonberta, Kilde Awlaelo, H/Wajerat and Enda Mokoni woredas.

Assistance through relief and PSNP continues in the region. A total of 21,769 MT of food has been distributed to 1,147,355 beneficiaries. The 25 PSNP woredas have received an average of six to seven months entitlement both in cash and food. In addition, under the TSF, a total of 662 MT of food is distributed to 23,789 beneficiaries. The refugees in Shilemba and May Ayni camps continue to receive emergency assistance.

AFAR

Compromised food security at household level has been reported in Afar Region. Chronic water shortage and AWD outbreak continue to be of concern for humanitarian actors.

The food security situation in the region has deteriorated during the month due to delayed and reduced PSNP distribution and poor performance of *karma* rains. The Regional Health Bureau and Food Security and Disaster Prevention and Preparedness Bureau in Afar have identified an initial 12 hotspot woredas including Elidaar and Kori (Zone 1); Erebt, Berhale and Bidu (Zone 2); Gewane and Bure Mudaytu (Zone 3); Teru, Yallo and Gulina (Zone 4) and Dalifage and Semurobi (Zone 5).



Out of which, Kori in Zone 1; Afdera, Berhale, Bidu, Erebti woredas in Zone 2; Teru and Yalo in Zone 4; and Delafage in Zone 5 have been identified as critically food insecure woredas requiring immediate interventions.

A rapid assessment team comprised of UNICEF, DPFBS, APDA and Save the Children UK verified the existence of critical water and pasture shortages in Erebti, Berhale, Elidaar, Kore and Bidu woredas.

The team reports that the poorest households have lost all their shoats and are leaving on a few last remaining animals, cereals purchased from the market and relief food assistance. The September 2008 monthly food security update reports that cases of malnutrition are continuing to be reported from hotspot woredas. The findings of rapid nutrition assessments conducted by Save the Children UK and MSF Holland and MSF Greece revealed critical malnutrition in Erebti woredas of Zone 2 and Gulina woreda of Zone 4 between 1st and 7th September. The assessment team recommended quick response including shelter, medicine and supplementary food for the displaced people in Haytan and Alayita kebeles. The Emergency Nutrition Coordination Unit (ENCU) is urging all partners to provide interventions. Meanwhile, Therapeutic Feeding Programmes have started in Teru by MSF Greece and MSF Holland in four sites of Elidar and eight sites in Kori by APDA and by the regional government in Gulina.

AWD relapsed in the region in August with cases reported from Amibara and Awash Fentale woredas. Additionally, the regional monthly report includes reports of measles cases in Adaar woreda of Zone 1. According to Elwuha Clinic the affected children come from Wo'antuna Fursa kebele, notes the report. Similar cases are also reported from Berhale woreda.

Early migration of people and livestock started since April in most hotspot woredas. In Erebti woreda about 300 people left their village (Alayta and Hayten kebeles) and temporarily settled in Albo Kebeland the woreda center due to drought and severe water shortage. Similarly in Teru, pastoralists from Debeho and Mebay kebeles migrated to the woreda capital, Alelu.



The performance of *karma* (main rainy season) that extends from July to September was below normal in most parts of Afar with reports of delayed onset and early cessation. The rains were inadequate and erratic. The most affected woredas include: Elidar, Kori, Berehele, Bidu, Erbeti, Bure Mudaytu, Gewane, Teru, Gulina, Dalafage and Semurobi woredas.

The poor performance of the *karma* rains has significantly affected the availability of pasture and water. Acute water shortage persists in the chronically insecure areas of Elidar, Teru, Erebti, Berhale, Kore and Bidu woredas. The Regional Government, with support from UNICEF, continues to provide water tankering interventions in Bidu (Zone 2), Kori and northern parts of Elidar (Zone 1). Similar intervention will soon start in Erebti woreda of Zone 2.

Critical shortage of pasture caused by cumulative effects of recurrent drought in the last decade contributed to poor livestock body condition in most parts of Zone 2, northern parts of Zone 1 and most parts of Teru. As a result, livestock productivity has also declined with reports of reduced milk availability. The situation could deteriorate with the long dry season that extends from October to February. The latest monthly publication notes that occurrence of livestock diseases in some hotspot woredas particularly Elidaar, Kore and Bidu. In addition, in Dallul woreda, unidentified camel disease has killed considerable number of goats and camel. The report notes the need to prepare emergency livestock contingency plan for the region to maintain asset of pastoralists.

The regional monthly food security update indicates that the pastoralist purchasing power has slightly increased in September compared to the previous month due to decrease in the price of maize and increase in the price of goats. The cereal price showed a gradual decline in Aysaita, Chifra and Awash Fentale markets during the last two months. The main reason for the decline of maize price is the government's intervention to stabilize cereal market and also the start of green consumption in the neighboring highland areas. The price of goat has increased by 13.6 percent in Asayita and 2.8 percent in Awash Fental market. The slight increment in goat prices is partially linked with Ramadan holiday, when prices are typically higher due to increased demand and improved body condition. Nevertheless, the reports notes that compared to the same period last year, the terms of trade has reduced by 70 percent in Asayita market. Pastoralists sold 1.7 goats to purchase 1quital of maize; while only one goat was able to purchase a similar amount of maize.

The latest 2008 Revised Humanitarian Requirements Document indicated that the identified beneficiaries in the Region will be address through the Productive Safety Net Programme. About 472,000 people benefit from the special PSNP program in Afar where assistance is provided without undertaking physical work. Currently the sixth round (June 2008) distribution is completed. In addition, approximately 294 MTs of CSB have also been delivered to the neediest woredas. Furthermore, about 11 MTs of emergency food resources were also dispatched to 1,600 flood victims in Abala woreda of Zone 2.



The first round of food for the fifth round Enhanced Outreach Strategy screened beneficiaries (53,000 children and lactating mothers) has been dispatched to 109 Food Distribution Centers in 15 woredas of Zone 1 and 2 from 9th of August to 12th September. A total of 1,470 MT of supplementary food was dispatched and delivered. The Regional DPPB supported by WFP is currently planning to dispatch the second round TSF food. The regional monthly food security update highlights that due to resource shortage the TSF ration is reduced by half for Zone 1 and 2, extending beneficiaries recovery period in the upcoming long dry season. Furthermore, GAA and APDA have received US\$ 522,698 from the Humanitarian Response Fund (HRF) to undertake emergency livestock interventions in Elidar (Zone 1), Awra (Zone 4) and Kore (Zone 2) woredas. Similarly, Oxfam- GB has applied for HRF fund to implement WASH activities in Kore and Bidu woredas Zone 2 and Elidar woreda (Zone 1).

GAMBELLA

In Gambella, floods affected several woredas and impacted many communities. An estimated 77,025 emergency beneficiaries are included in the latest Humanitarian Requirements Document for emergency food assistance until November 2008.

Heavy rains in Gambella as well as in the highland areas led to the overflow of Baro, Akobo and small streams and flooded 11 woredas between the 12th and 21st August. A joint Federal Ministry of Health (FMoH/WHO) team visited the affected areas between the 5th and 12th September and reported that 90,000 people have been affected, out of which 35,000 were displaced and three people killed in Itang, Akobo, Lare and Abobo woredas. Most of the displaced people are taking shelter in schools, government compounds and relatives' houses. The floods have damaged properties, crops, livestock and infrastructure, which affected school attendance, clinic services and availability of food. Maize and sorghum crops on 4,729 hectares of land have been totally destroyed, according to the regional DPPB.

The joint FMoH/WHO team reports that health threats among the displaced have increased particularly malaria, diarrheal disease and respiratory infections. The shortage of drinking water is exacerbating the health of people in the region.

The FMoH, with WHO support, has supplied emergency drugs and medical supplies for 10,000 people for one month. In collaboration with FMoH, WHO is currently procuring additional drugs and medical supplies valued at US\$ 54,000. Meanwhile, the Emergency shelter, Camp Coordination Camp Management (CCCM) and Non-Food Items (NFIs) Cluster is finalizing preparations for multi-sectoral interventions. UNICEF provided NFIs to benefit 6,000 households. Regional Water Bureau, UNICEF and Samaritans Purse also distributed water purification chemicals to more than 9,000 households. In addition, UNICEF provided tents and educational materials were distributed to benefit 16,000 students.

UPCOMING AND ONGOING MEETINGS

In Addis Ababa

October 22	Health Partners Forum Meeting, WHO, 02:30p.m., (Open to all)
October 22, 29	UN Technical Officers Meeting, UN OCHA, 08:30a.m., (Invitations only)
	HRF, Review Board Meeting, UN OCHA, 03:00p.m., (Invitations only)
October 23, 30	Humanitarian Coordination Meeting, UNDP, 10:00a.m., (Invitations only)
October 28	Water Task Force Meeting, MoWR, 10:00a.m., (Open to all)
October 29	MANTF Meeting, DPPA General Directors' Conference Room, 02:00p.m., (Open to all)

In the Regions – Somali, SNNPR, Amhara & Afar

October 24, 31	Regional Child Survival Task Force Coordination Meeting, SNNPR, FSDPP Sector Conference room, 10:00 a.m., (Open to all)
	Agricultural Task Force Meeting, Gode, WFP conference Room, 09:00a.m., (Open to all)
October 18, 25,	Drought Response Coordination Meeting, Degehabur, Deg. Zone Admin Office, 09:30a.m., (Open to all)
October 20,	WASH & Livestock and Agriculture Meeting, Kebridehar, UN Conference room, 09:00a.m., (Open to all)
October 21, 28	Humanitarian Coordination Meeting, Gode, Regional President's Office, 09:00a.m., (Open to all)
	Agriculture/Livestock Task Force Meeting, Kebridehar, UN Conf.room, 09:00a.m., (Open to all)
	Area Security meeting, Gode, WFP Conference Room, 03:00pm, (Open to all)
	Afar coordination meeting, Afar, Semera, DPP & FS Bureau, 08:00a.m., (Open to all)
October 22,	Agriculture Task Force Meeting, Jijiga, LCNRDB, (Open to all)
October 22, 29	Food Distribution & Monitoring Comm. Meeting, Kebridehar, UN Compound, 10:00a.m., (Open to all)
	Health & Nutrition Meeting, Kebridehar, town Hospital, 03:00p.m., (Open to all)
	Area Security meeting, Jijiga, UNHCR Conference Room, 04:00p.m., (Open to all)
	Area Security Meeting, Kebridehar, UN Compound, 05:00p.m., (Open to all)
October 23, 30	Humanitarian Co-ordination Forum Meeting, Kebridehar, UN Conference room, 10:00a.m., (Open to all)
October 27	Nutrition Task Force Meeting, Bahirdar, Reg. Bureau of Health, 02:00p.m., (Open to all)
October 29	Emergency Task Force Meeting, BarhirDar, Reg. FSDP Office, 09:00a.m., (open to all) TBC
October 30	WASH Coordination Meeting, SNNPR, Awasa, RWB, 03:00p.m., (open to all)