

UN Recovery Coordination Initiative Projects I & II

Project Implementation GN Divisions

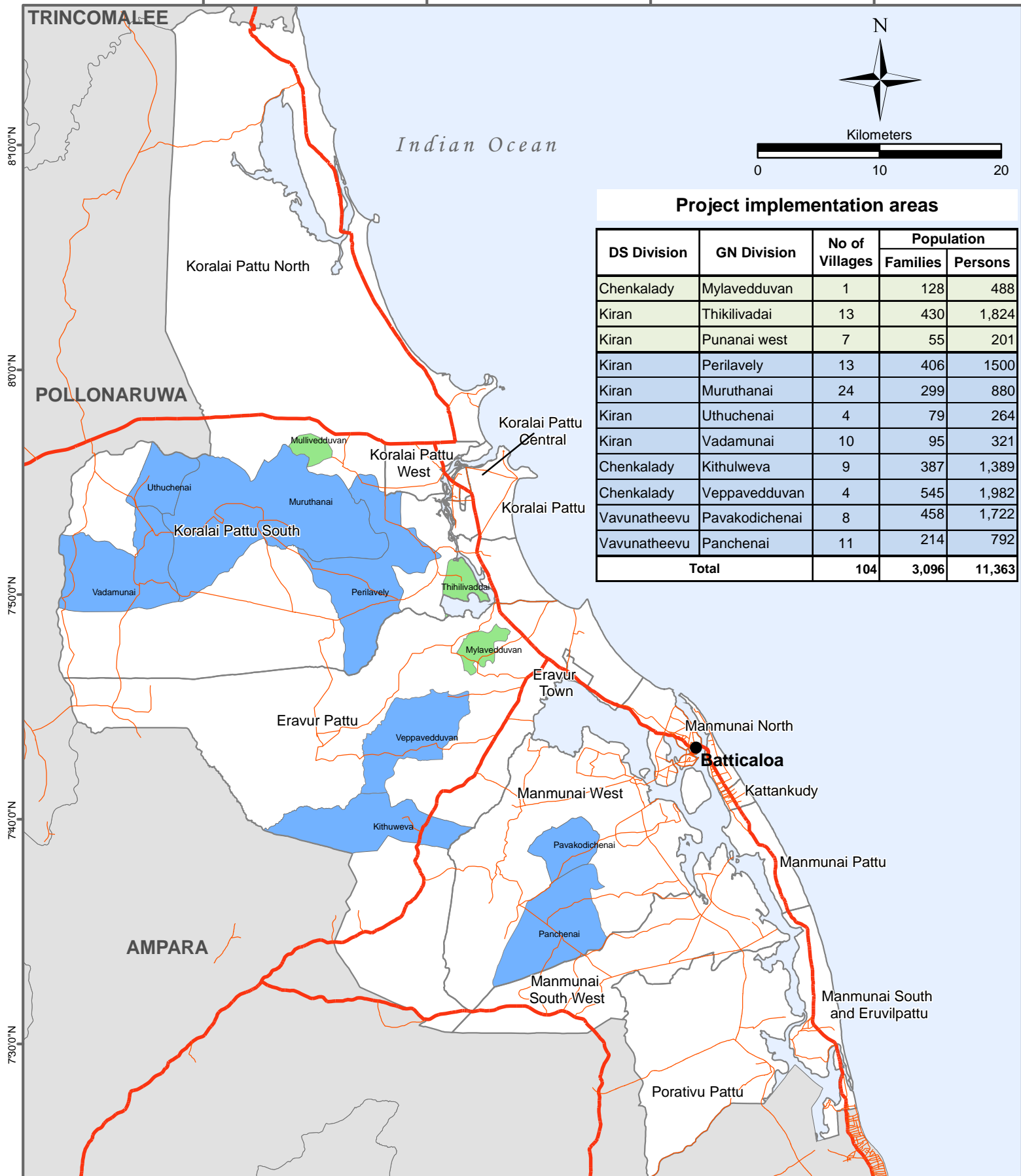
District: Batticaloa

81°20'0"E

81°30'0"E

81°40'0"E

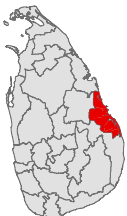
81°50'0"E



Project implementation areas

DS Division	GN Division	No of Villages	Population	
			Families	Persons
Chenkalady	Mylavedduvan	1	128	488
Kiran	Thikilivadai	13	430	1,824
Kiran	Punanai west	7	55	201
Kiran	Perilavelly	13	406	1500
Kiran	Muruthanai	24	299	880
Kiran	Uthuchenai	4	79	264
Kiran	Vadamunai	10	95	321
Chenkalady	Kithulweva	9	387	1,389
Chenkalady	Veppavedduvan	4	545	1,982
Vavunatheevu	Pavakodichenai	8	458	1,722
Vavunatheevu	Panchenai	11	214	792
Total		104	3,096	11,363

Area Detail



Legend

- Main Road
- Secondary Road
- GN divisions proposed for RCI II Project in 2009
- GN divisions covered by RCI I Project in 2008
- GN Boundary
- DS Boundary
- District Boundary

Data sources:

UNDP, Batticaloa

Updated as at: 16-Jan-2009

Produced on: 16-Jan-2009

Projection / Datum: Transverse Mercator Kandawala

Admin boundaries provided by: Survey Department, Government of Sri Lanka

MapNumber: OCHA/LK/BATTIW3/UNDP/01/1/2

This map is designed for printing on A4 size

The boundaries, names and the designations used on this map do not imply official endorsement or acceptance by the United Nations.



© 2008 UN Office for the Coordination of Humanitarian Affairs, Sri Lanka
 No: 22, Bally Cross Road, Batticaloa
 Tel: +94 (65) 2227458, Fax: +94 (65) 2227457,
 Email: ocha.batticaloa@gmail.com
 Website: www.hpsl.lk
<http://ochaonline2.un.org/srilanka>

Produced through the generous support of:

