

# UN Recovery Coordination Initiative Projects I & II

## Project Implementation GN Divisions

**DISTRICT : Batticaloa**  
**DS: Koralai Pattu South (Kiran)**

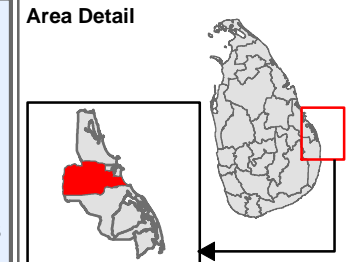
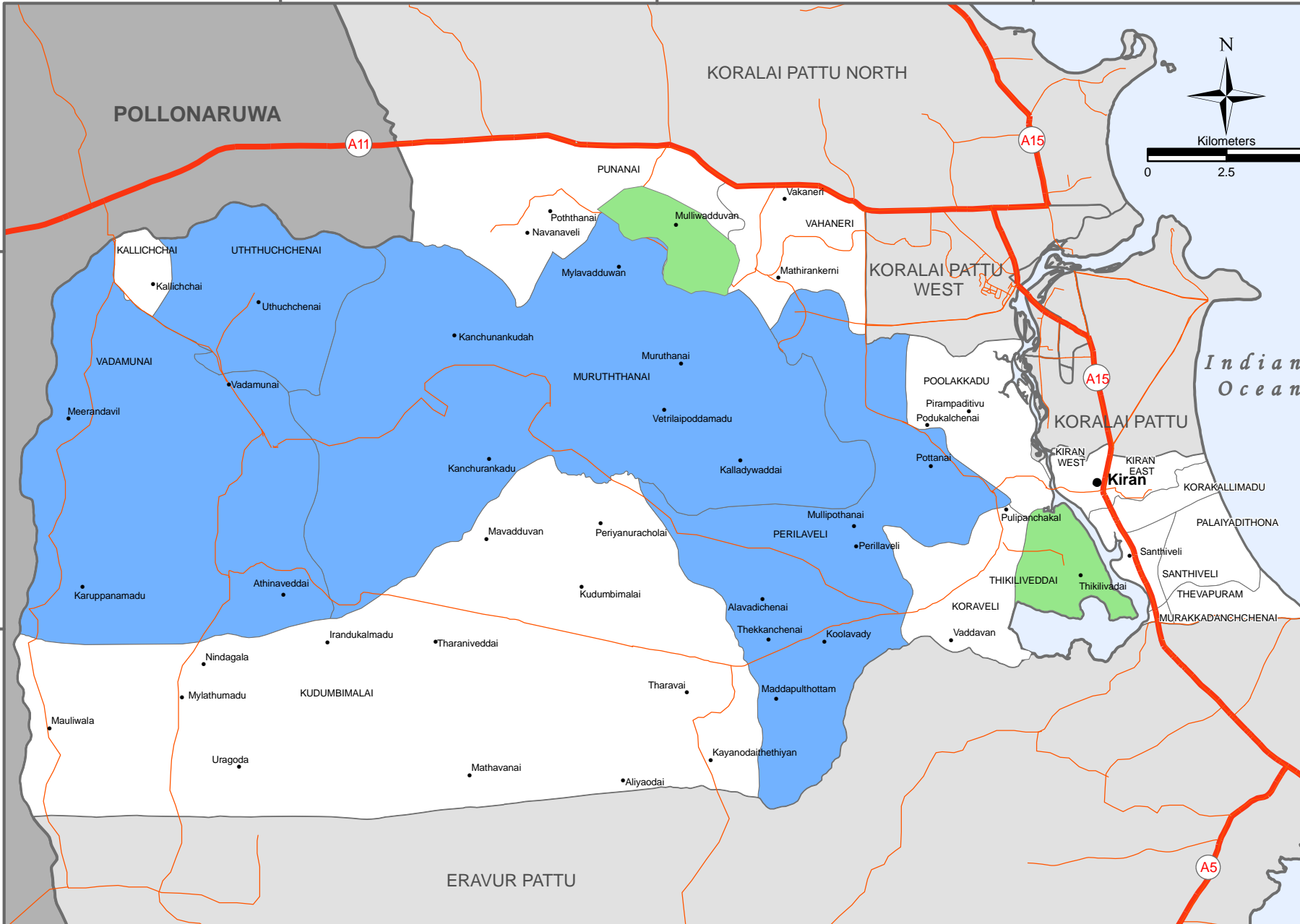
81°18'0"E

81°24'30"E

81°31'0"E

7°56'0"N

7°49'30"N



- Legend**
- Main Town
  - Village
  - Main Road
  - Minor Road
  - GN divisions proposed for RCI II Project in 2009
  - GN divisions covered by RCI I Project in 2008
  - GN Boundary
  - DS Bounday
  - District Boundary

**Data source(s):**  
 UNDP, Batticaloa

Updated as at:	26-Jan-2009
Produced on:	26-Jan-2009
Projection / Datum	Transverse Mercator Kandawala
Admin boundaries provided by:	Survey Department, Government of Sri Lanka

MapNumber: OCHA/LK/BATTI/UNDP/ 04/ v1  
 This map is designed for printing on A4 size

The boundaries, names and the designations used on this map do not imply official endorsement or acceptance by the United Nations.



© 2007 United Nations Office for the Coordination of Humanitarian Affairs, Sri Lanka  
 # 22, Baily Cross Street, Batticaloa, Tel: +94 (65) 2227458, Fax: 94 (65) 2227457, Email: ocha.batticaloa@gmail.com, Website: www.hpsl.lk, http://ochaonline2.un.org/srilanka

Produced through the generous support of:

