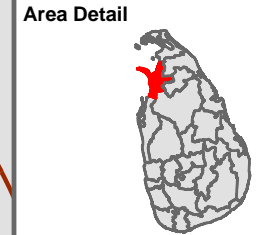
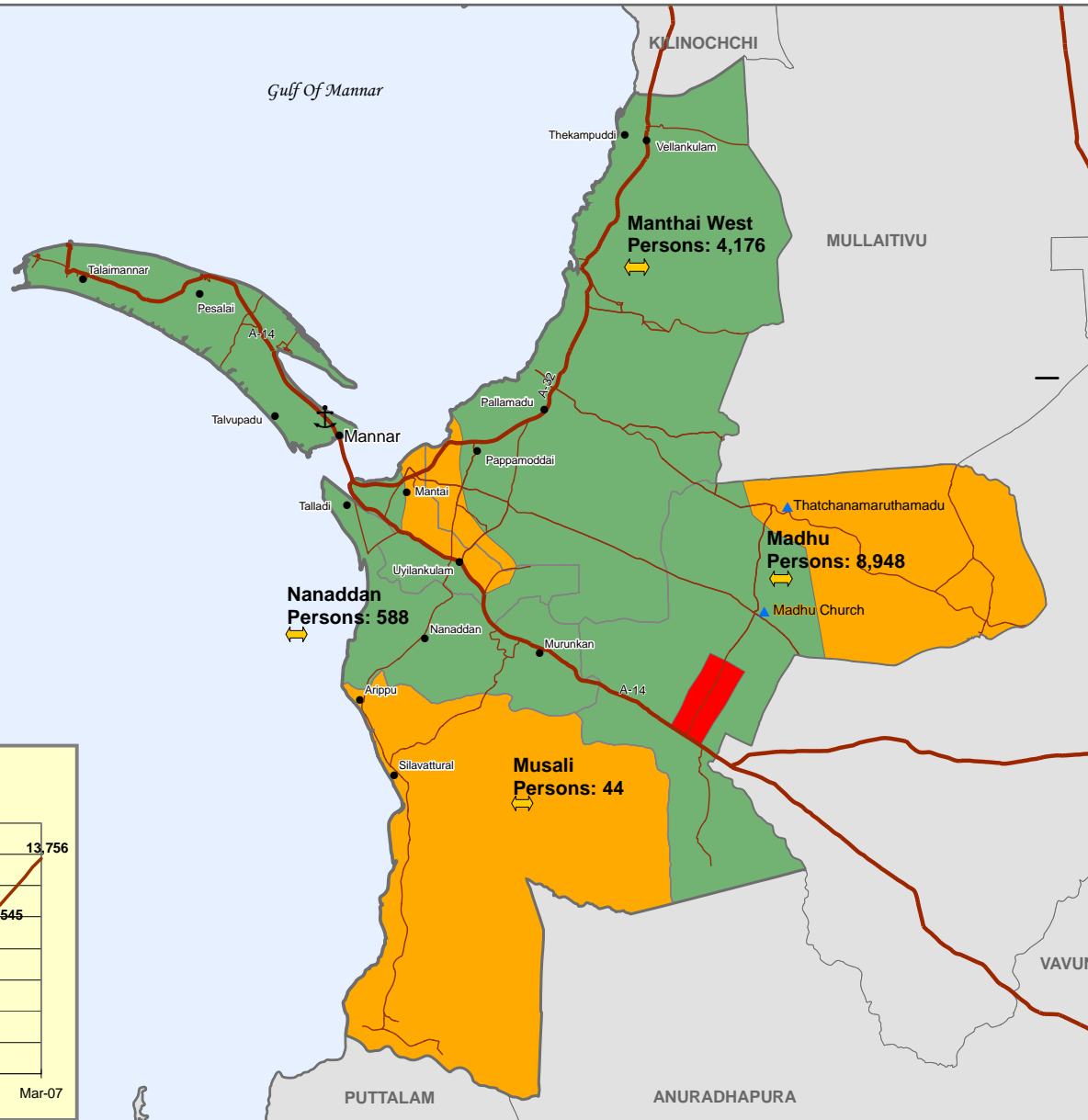


Total Number of Displaced Persons:
13,756 ⇄



- Legend**
- Access Details**
- Full Access
 - Partial Access Area
 - No Access Area
 - Numbers of displaced persons steady
 - Numbers of displaced families decreasing
 - Numbers of displaced families increasing
 - Known IDP Sites
 - Villages
 - Main Road
 - Minor Road
 - ⚓ Port
 - DS Boundary
 - District Boundary

Note:
 IDP locations refer to areas with a high concentration of IDPs. Most IDPs from schools and communal places have moved either into host families or have been resettled by the authorities.

Data Source:
 IDP numbers are taken from the Ministry of National Building & Development and UNHCR, Colombo. Access is based on the best current information provided to the United Nations by authorities

Updated as at:	28-02-2007
Produced on:	23.03.2007
Projection / Datum	Transverse Mercator Kandawala
GLIDE number	TS 2004-0001470LKA
Admin boundaries provided by:	Survey Department, Gvt. of Sri Lanka
MapNumber:	UNOCHA/LK/MANNAR/IDP/013/V1
This map is designed for printing on A4 size	
The boundaries, names and the designations used on this map do not imply official endorsement or acceptance by the United Nations.	

