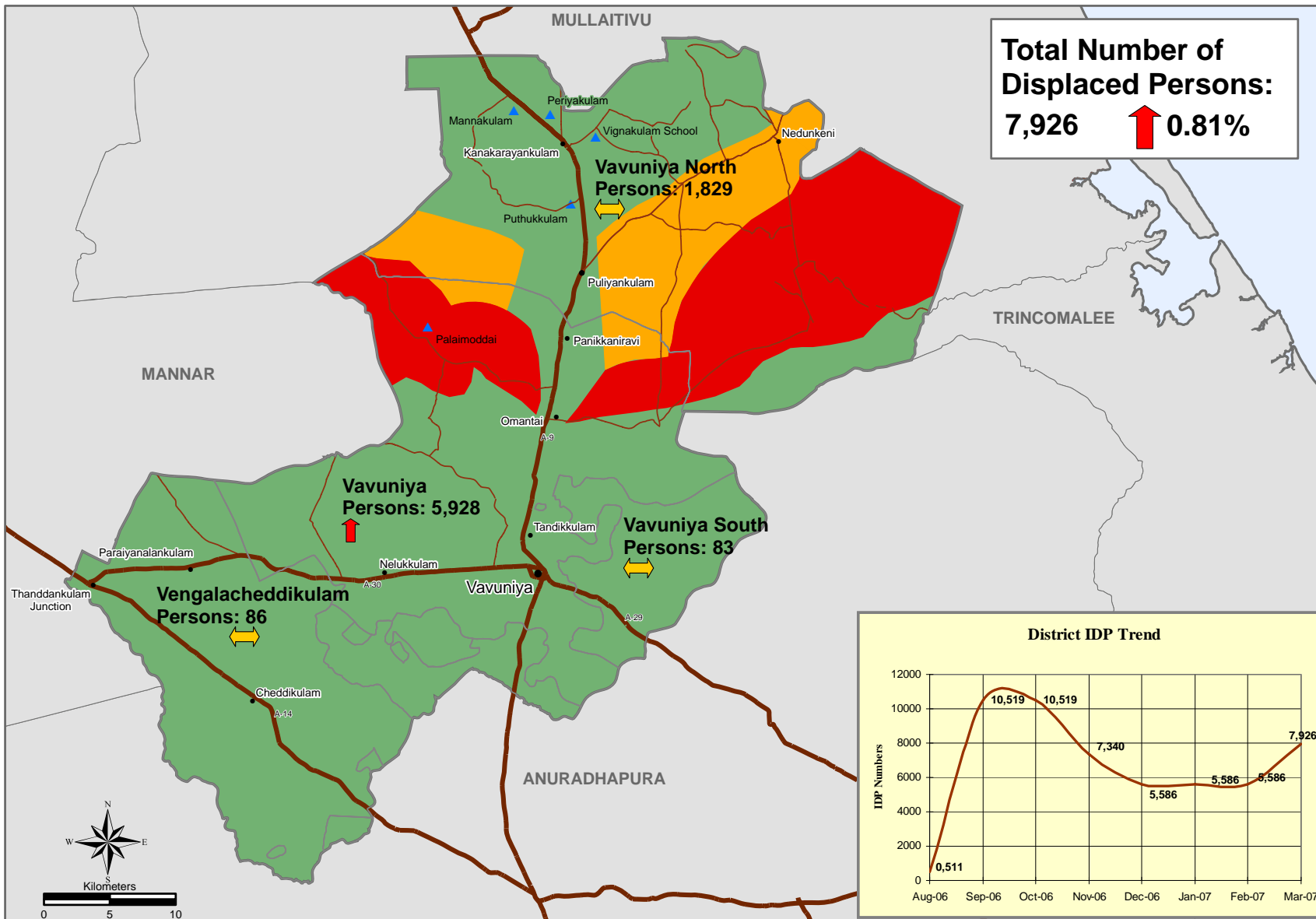
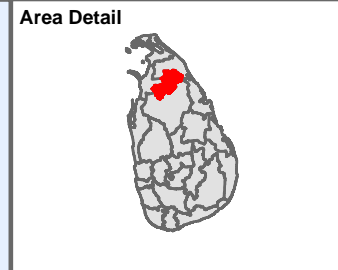


IDP information updated as at 27 March, 2007 &
 Access information updated as at 28 March, 2007

DISTRICT: Vavuniya



Total Number of Displaced Persons:
7,926 ↑ **0.81%**



- Legend**
- Access Details**
- Green: Full Access
 - Red: No Access
 - Yellow: Partial Access area
 - Yellow double arrow: Numbers of displaced persons steady
 - Red arrow pointing up: Numbers of displaced families increasing
 - Green arrow pointing down: Numbers of displaced families decreasing
 - Blue triangle: Known IDP Locations
 - Black dot: Town
 - Thick brown line: Main Road
 - Thin brown line: Minor Road
 - Grey outline: DS Boundary
 - Thick grey outline: District Boundary

Note:
 IDP locations refer to areas with a high concentration of IDPs. Most IDPs from schools and communal places have moved either into host families or have been resettled by the authorities.

Data Source:
 IDP numbers are taken from the Ministry of National Building & Development and UNHCR, Colombo. Access is based on the best current information provided to the United Nations by authorities

Updated as at:	27.03.2007
Produced on:	29.03.2007
Projection / Datum:	Transverse Mercator Kandawala
GLIDE number:	TS 2004-0001470LKA
Admin boundaries provided by:	Survey Department, Gvt. of Sri Lanka
MapNumber:	UNOCHA/LK/VAVUNIYA/IDP/013/V1
This map is designed for printing on A4 size	
The boundaries, names and the designations used on this map do not imply official endorsement or acceptance by the United Nations.	

